

## **Ambulanc (Shenzhen) Tech. Co., Ltd.**

# **Control of Manufacturing Process of the T6**

Product: Ventilator

Model: T6

Revision: A1.0

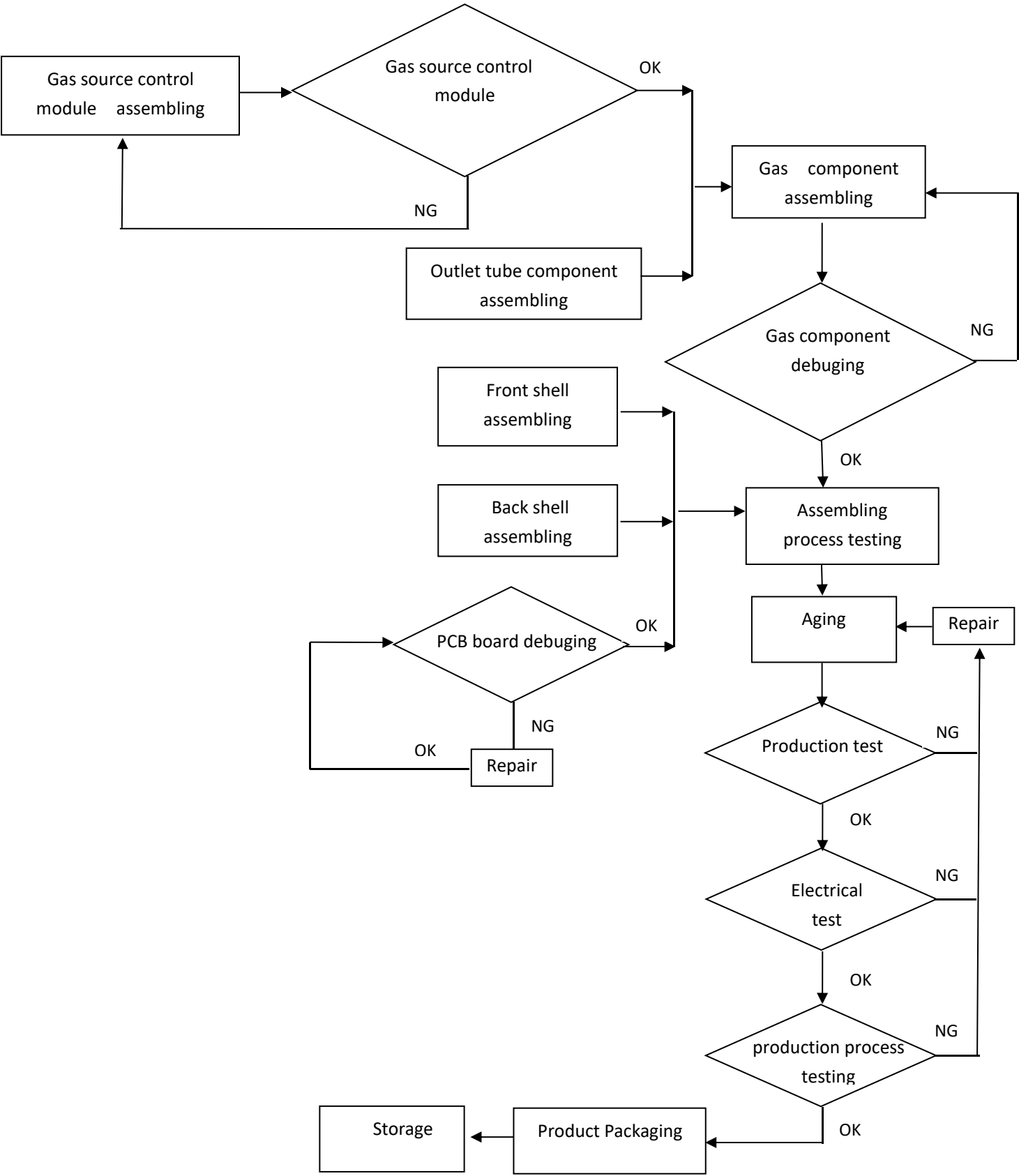
Date: 2020 Dec 20

# **Control of Manufacturing Process**

## **1. Summary**

The manufacturing process of T6 involves the prevention of the process control, traceability, preventive maintenance, label control, and the final release specifications. During the whole process of manufacturing products, we developed a corresponding program file, and a careful implementation.

## **2. Production process description**



Note:  $\triangle$  represents key process.

### **3. Description of process control**

While launching T6 products, the necessary production drawings, process cards and circulation cards with batch numbers are issued by our production department. Among them, batch numbers are all unique and traceable, the circulation cards can record workers' names for every manufacturing process as well as inspection staff's names during every inspection process. The manufacturing processes with "△" marks are identified as the key points of quality inspection process, which should be tested and confirmed before the execution that they are executable for the next process by production engineer or product manager.

During the process of manufacturing, production department inspectors are responsible for the first seizure and inspection to monitor the products and ensure the products pass the process control system. Quality Department inspectors have the final inspection of products, to meet the requirements for packaging.

Before product storage, Quality Department completes the product quality certificates according to products batch numbers and quantities and submits to the Production Department, then packaging staff from Product Department print labels with bar codes and finish product packaging. In the bar code, there contains large amounts of product information, including product models, specifications and batch numbers, and so on.

Based on product bar codes, the company's products can date back to the circulation cards since the sales at dealers, until the material dates back to product suppliers and outsourcing parties.